



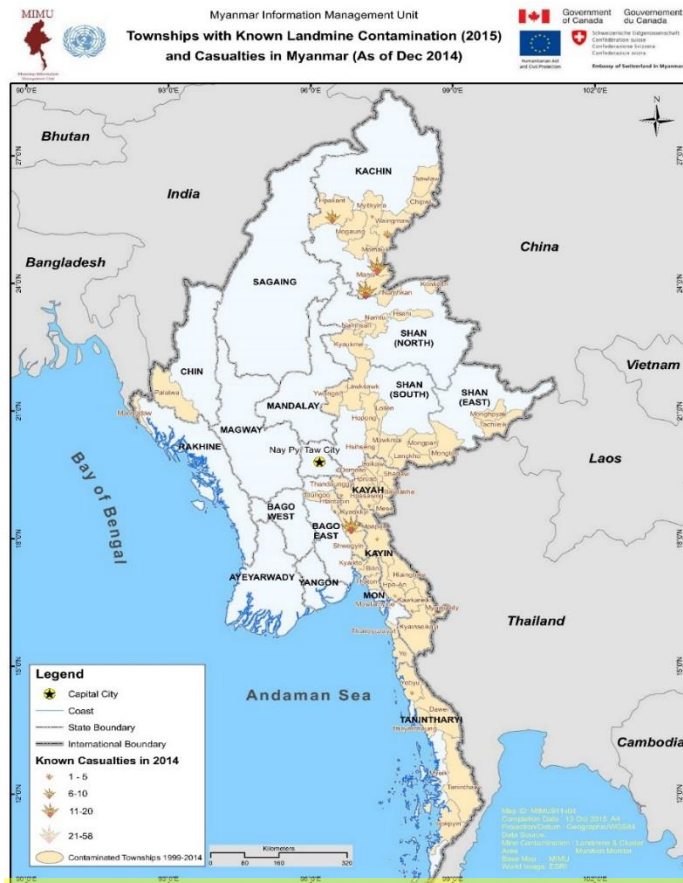
## COMMUNITY-BASED APPROACHES FOR EFFECTIVE ACTION

**MYANMAR**



# LANDMINES/ERW - HIGH THREAT TO COMMUNITIES

## YESTERDAY & TODAY



➤ 9 out 14 States and Regions are contaminated

➤ Increase in casualties documented

✓ 159 casualties documented in 2016 ( > 2015)

✓ First month of 2017, already 17 casualties

➤ Over the last 2 years, on an average basis,

- a landmine incident every 5 days

- 1 survivor out of 3 was a child

- 1 survivor out of 4 died

**Over 4,000 people in Myanmar are known to be mine victims, but the actual number is believed to be far higher.**

# ONGOING EFFORTS WITH THE PEACE PROCESS, BUT COMMUNITIES DRIVE OUR WORK

**SAFETY CAN NOT WAIT FOR PEACE...**



Accelerated efforts on  
Community-Based Mine  
Action on:

- ✓ Mine Risk Education
- ✓ Victim Assistance
- ✓ Decentralized advocacy and coordination

# COMMUNITY-BASED MRE

2014: KAP survey

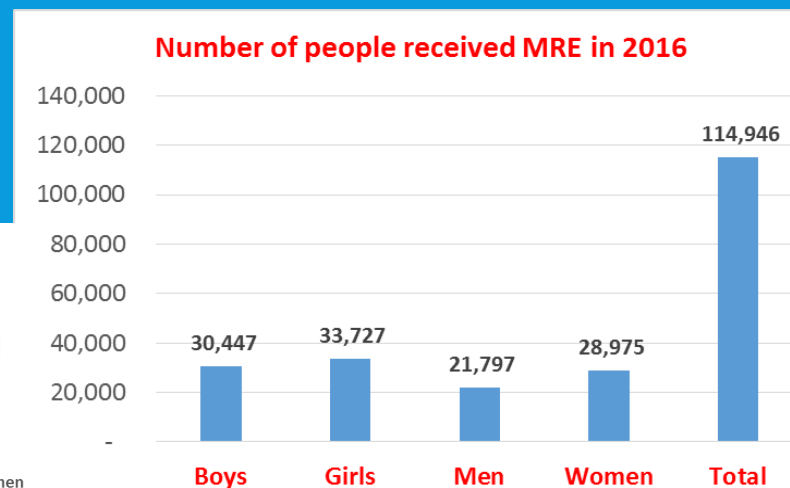
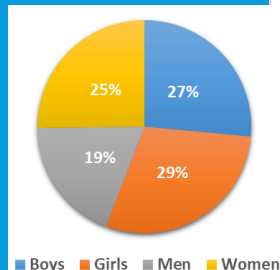
2016: Common Mine Risk Education Tool Kit field-tested and approved by the Government



Rewarding results in 2016

- ✓ 40 organizations adopted the kit
- ✓ 200 certified community MRE facilitators
- ✓ 115,000 people reached
- ✓ Built confidence for communities to speak up

It takes time to significantly involve communities and to break the silence on a sensitive issue









# COMMUNITY-LED VICTIM ASSISTANCE

- One Victim Assistance Center model piloted, successfully led by **people living with disabilities, including landmine survivors**

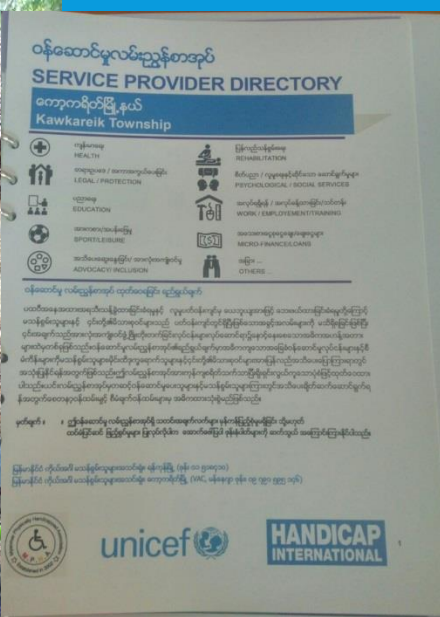
➔ Now, 3 Victim Assistance centres

- Address stigma and discrimination & contribute to inclusive communities
- **1,500 survivors & person with disabilities** were identified by one 1 centre

*Engaging communities make survivors and their needs **VISIBLE***





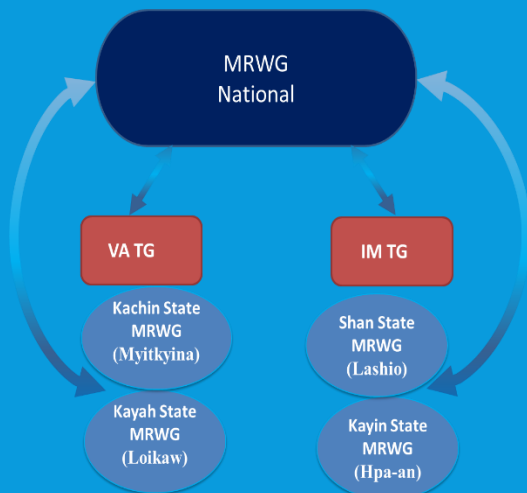


Identification,  
service directory,  
peer support,  
rehabilitation,  
community  
mobilization...





# DRAW LOCAL SOLUTIONS THROUGH DECENTRALIZATION



• 4 State level mine action coordination platforms :

- ➔ Strong involvement of grass-root, ethnic and faith-based organizations
- ➔ Community voices stronger through their representatives at the **Parliament**
- ➔ Building trust among local government counterparts and ethnic groups





# BENEFITS ARE GREATER THAN CHALLENGES

## CHALLENGES

- Difficult to maintain **quality assurance**
- Hard to **monitor remote communities**.
- **Investing in communities has also a COST** – time & money. *Investing in the human capital costs more than a radio campaign....*

## BENEFITS

- ✓ Communities gain **ownership**, & mine action is **sustainable**.
- ✓ Increased **presence** = increased (humanitarian) **access**
- ✓ **Timely response** – first responders are part of the affected communities and closer to the survivors

