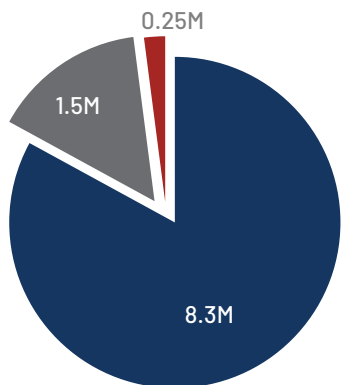


# Fact sheet

**Source: Situational Analysis of ERW and APM in the Amhara and Afar regions: 2020 - 2022**

**IDPs, Returnees and host community members living in the contaminated areas of the Afar and Amhara regions**

- Host community members
- IDPs
- IDP returnees



Source: DTM VASR12 & SAR29 4/30/2022



122 woredas, 33 in the Afar and 89 in Amhara regions are potentially contaminated by ERW



Since November 2020, an explosion has killed 185 people in the Afar and 267 in the Amhara regions, mostly children



68% of the woredas in the potentially contaminated area are classified as food insecure

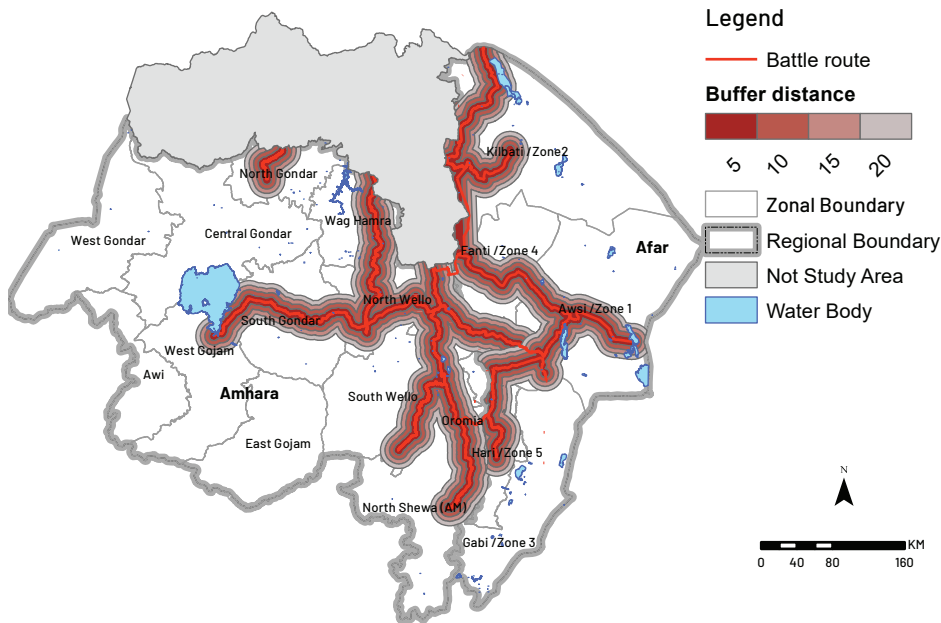


37% of the water structures, 2.2 million hectares of crop land, and 19,000km of road are found in the potentially contaminated areas

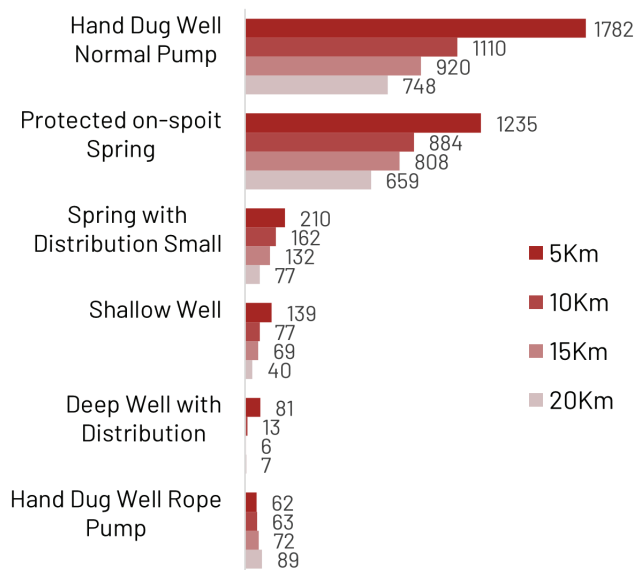


Afar: 28 injuries and 12 deaths  
Amhara: 152 Injuries and 30 deaths

## Spatial analysis scope of the study in the Afar and Amhara regions



## Water points per distances from the battlefields in the Amhara region



## Explosive Ordinance Risk Education (EORE) Activities

**18**

**EO Assessments conducted**

**8**

**IDP Sites received EORE**

**195**

**EORE TOT sessions provided**

### Gender and age of EORE beneficiaries



**6,037**



**5,705**



**8,992**



**7,466**

**28,200** Beneficiaries received direct EORE